

Don't miss our Spring Concert

Saturday • May 5, 2007

Location to be announced

DEEP PEACE

Mark your calendar and be
sure you're on our mailing list.
Sign up in the lobby.



SAS!
Sisters and Songwriters

With special guests
Janiz Womack and Bobbi Carmitchell

Saturday - November 18, 2006
Colonial Park United Church of Christ
Harrisburg



This project is supported by the Pennsylvania Council on the Arts, a state agency, through its regional arts funding partnership, Pennsylvania Partners in the Arts (PPA). State government funding comes through an annual appropriation by Pennsylvania's General Assembly and from the National Endowment for the Arts, a federal agency. PPA is administered in this region by Jump Street.





We look
forward

to your brilliant
performance.

Congratulations to
CPWC for 12 years
of sharing musical
excellence and
loving spirits with
the GBLT
community
in South Central
Pennsylvania!

www.kpmg.us.com

AUDIT ■ TAX ■ ADVISORY

KPMG

The Harrisburg Men's Chorus Presents...

Let Music Live

January 20 at 8 PM

January 21 at 2 PM

Unitarian Church of Harrisburg

1280 Clover Lane

Tickets \$15 Students and Seniors \$10

Contact Tim at 433-0184 or David at 233-4353 or
www.harrisburgmenschorus.org

Integral education...



...bringing the world to school
*Making school a microcosm of the world,
a place where children practice life.*

The Circle School • Pre thru High School
Harrisburg • Free bus • Financial Aid
717-564-6700 • www.CircleSchool.org



A POSITIVE FIRST SCHOOL EXPERIENCE FOR YOUNG CHILDREN

Children's Morning Out

Tuesday mornings 9:00 to 11:30am • Free of charge
For children 3-1/2 (by Sept 1) to 5 years old
www.CircleSchool.org • Call 717-564-6700



Jane Swope Bailyn

Granddaughter of singers Shirley Tannenbaum and Susan Swope.
Placed with love by her other grandmother, Lotte Bailyn.

WWWe're on the WWWeb!

Information on upcoming concerts and other events, plus a delightful collection of photos, program notes, newsletters and lots more. Check us out!

www.cpwchorus.org

P. O. Box 60426 • Harrisburg PA 17106-0426
717-234-4825 • info@cpwchorus.org

Founded in 1996, the Central Pennsylvania Womyn's Chorus brings together a diverse group of women, united by the joy of singing, to celebrate and empower women, and to affirm a positive image of lesbians and feminists.

The chorus rehearses every Monday night (with holiday and summer breaks) and the board meets monthly at United Church of Christ, 5000 Devonshire Road, Harrisburg. We welcome new singers. Speak to Giesala, our director, about singing (A1969Diva@aol.com).

Join the Womyn's Chorus family
and find out how much fun Monday nights can be!



CPWC is a proud member of the Gay and Lesbian Association of Choruses (GALA) and the Sister Singers Network.



California Café

"California-French fusion cuisine at a reasonable cost"

We Proudly Brew
STARBUCKS COFFEE



Lunch and Dinner Every Day
Reservations: 249-2028

38 W. Pomfret Street, Carlisle, PA • www.calcaf.com

APPALACHIAN

WHOLE FOODS MARKET


We offer fresh organic produce, bulk coffees, spices, grains, beans and flours, vegetarian sandwiches and salads, Big Sky Breads, natural snacks, vitamins and supplements, and of course just lots of good healthy food!

CLASSES OFFERED IN THE LIVING PLANET LEARNING CENTER!

Hours: Mon-Fri. 9-6; Sat. 9-4

100 West High Street, Carlisle, PA 241-6982

INFINITY BEADS



endless possibilities

Need a gift for a special occasion?
Select from our many finished pieces or design one yourself.

FOR CLASS INFORMATION
visit us at infinitybeads.com or
405 N. EAST ST.
CARLISLE, PA 17013
717-960-9100

Tues., Wed., Fri. 11am-6pm
Thurs. 11am-8pm, Sat. 10am-3pm

GIFT CARDS AVAILABLE

DOWNTOWN ANTIQUES AND ART

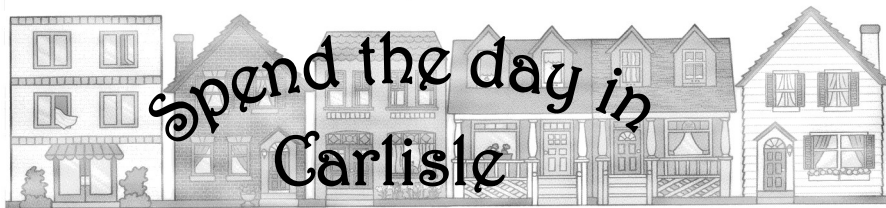
Where the Past can be the Present

- * Country & Formal
- * Silver & Tableware
- * Pottery & Glassware
- * Baskets & Jewelry
- * Linens & Quilts
- * Children's Items
- * Gift Certificates
- * Book Room

2 Floors of Merchandise
in the Historic Downtown Carlisle Area

152 N. Hanover Street
Carlisle
Exit 47 off I-81

249-0395 Tues.-Sat. 10-5



The Yarn Garden

is now open!

10 W. Pomfret Street

717-249-YARN

Featuring exquisite yarns, needles, patterns, books, and more!
The Yarn Garden invites you to come in and check out the incredible assortment of colors, fibers and many ideas for projects. Find out about upcoming classes.



Art•Design•History

- The Finest Custom Framing
- Art, Frame & Photo Restoration
- Fine Pennsylvania Art and Craft



— Since 1976 —

10 N. Hanover Street
Carlisle, PA 17013-3013

717-249-1721

www.thegardengallery.com

e-mail: c2464@aol.com

Metropolitan Community Church of the Spirit

proudly presents



A Christmas Cantata

'The Glory of Christmas:
Experience the Season'

Sunday, December 17th

3:00 pm

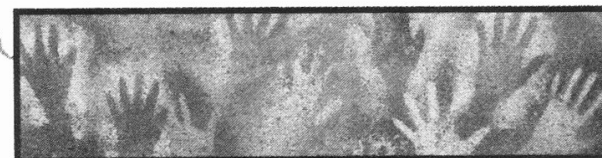
2973 Jefferson St, Harrisburg

For more information, call 236-7387.

You are cordially invited to worship with us on Christmas Eve.

Services will be held at 7:00 pm and 11:00 pm.

"Music is a powerful element — it touches people at such a deep level. It never ceases to amaze me how intensely gratifying it is to experience the energy exchange between performer and audience, and it's true no matter what side of the footlights you're on. It's my heart and soul." — Janie Womack



Kathy Fillman

Therapeutic Massage
Specializing in Myofascial Release

(717) 939-9729

E-mail: Shoesie@aol.com

HAVE TABLE WILL TRAVEL



Meeting the 2nd and 4th Friday monthly
7:00-9:00 PM

Providing safety, support, and
encouragement for individuals living the
Unity principles
as gay men and lesbian women.

Contact Sandy at [sansmagic
@comcast.net](mailto:sansmagic@comcast.net)

927 Wertzville Road Enola, PA 17025
717-732-9773

Worship Services Sundays
9:00 & 11:00 AM

unitychurchharrisburg.com

SAVE THE DATE April 14, 2007

Follow the Yellow Brick Road to Fun
at EGAL's must-see Surprise Event
at the Whitaker Center!



Equity for Gays & Lesbians
is a grant-making fund of The Foundation
for Enhancing Communities, formerly the
Greater Harrisburg Foundation.

LMD PowerWash Pressure Washing & Cleaning

Houses • Buildings • Decks • Sidewalks
Heavy Equipment • Trucks • Commercial Sites

214 4th St., New Cumberland, PA 17070
Brandon Pankake, Owner



Heads Up For Hair

214 4th St., New Cumberland, PA 17070
(717) 909-0445

Just in time for the Holiday season! We've expanded our services And added new practitioners at both our Harrisburg and Carlisle locations.

Paraffin dips and Body Mud Treatments are now available as a stand alone treatment or added to a massage for the ultimate therapeutic experience.

Andrew Crimmel is offering an addictions/detox acupuncture package program which is the perfect tool to help you kick-start your New Year's Resolutions.

We also welcome the addition of Matrix Artist Myrriah Jannette, offering the area's first bellycasts for pregnant women. These beautiful plaster sculptures are made to order and make a unique gift for a baby shower or mother blessing.

Gift Certificates are available for these services and more at Nightingale Health & Wellness Services.

Nightingale Health and Wellness Services
Central Pennsylvania's Leader in Complementary and Alternative Medicine

We specialize in bringing together the best that modern healthcare has to offer combining family practice medicine with alternative and supportive therapies including: Traditional Chinese Medicine, Acupuncture, Mental Health Counseling, and Massage Therapy

2801 North Front Street * Harrisburg * 920-9579
1422 Trindle Road * Carlisle * 249-6175


Integrative Holistic Healthcare for the
Entire Family

Diane Rothrock

CAPITAL CUTS

Beauty
Salon

414 North Third
Harrisburg
236-8853

Intelligent Conversation
and
Outstanding Haircuts



*No matter who you are
or where you are on life's journey,
you are welcome here.*

Colonial Park United Church of Christ

Sunday Traditional Worship – 8:15 a.m.
Sunday Blended Worship – 10:45 a.m.

November 22 – 7:30p.m.
Community Thanksgiving Eve Worship

Christine S. Boardman, Interim Senior Pastor
Daniel E. Furman, Associate Pastor

 Kokopelli



Catering, PA

We deliver right to your door

Ask about

Corporate Catering

Gift Cards

Sumptuous Buffet Choices

Party Pan Items

Easy Individual Meals

Decadent Homemade Desserts

5% discount

with

this ad

When you're looking
for good cookin'
No one dishes you
like we do.

(717) 939-4308

To my sisters:

Our Testimony:

“and by our life, be we spirit;
And by our heart, be we womyn;
and by our eyes, be we open;
And by our hands, be we whole!”

All my love,
Cathy Hinman

Str
w@ng
man
+ Designs

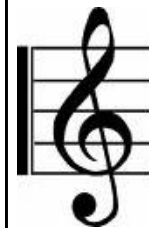
quality
comfortable
clothing
and
ritual garb
for women
of all sizes

email: leemelch@earthlink.net

phone: 717-749-5026

Marmalade

5-voice women's a cappella ensemble



Upcoming performances:

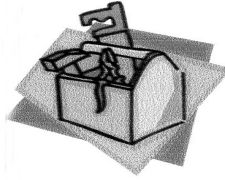
Saturday, December 2 ~ 8 PM
Crimson Frog Coffee House, Cedar Cliff

Friday, December 15 ~ 8 PM
St. Thomas Roasters, Linglestown

Saturday, December 16
True Espresso Café, Mountville

www.marmaladies.com

Home Repairs & Installations



Electrical, Plumbing, Fixtures
35 Years Experience
All Work Guaranteed

Dennis Foreman
(717) 731-6168

LEEDY COUNSELING SERVICES

Anne Leedy, MS, LPC
Sandy Abbey, CRNP/Psychiatric Nurse Practitioner
3201 Spring Road
Carlisle, PA 17013
(717) 241-2345

Individual couples, children, adolescents, families • Psychiatric evaluations, medication management

Accepting most major insurance

Daytime, Evening and Saturday hours



SUZANNE E. REISINGER
Lawn Maintenance

717-564-3147
717-877-9986
suzan91791@aol.com

Residential and Commercial
Servicing Harrisburg and
Surrounding Areas

We've broken away from the franchise after 20 years...

inkJETS Printing &
Same great service, with a new name!
Jody Evans, owner

JETS Novel-Tees
Formerly Greg's Novelty T-Shirts

Phone: 717-761-8822

Located in the Hampden Center
4830 Carlisle Pike
Mechanicsburg, PA 17050

E-mail: jets2print@aol.com

Fax: 717-761-1903

E-mail: noveltees4u@aol.com

Photo T-Shirts • Mugs • Hats • Sweats • Mousepads
Lettering • Transfers • Silk Screening • Embroidery

TRADITIONAL ACUPUNCTURE

Wellness for Body, Mind & Spirit

Spring Garden Health Arts
1417 East Market Street
York, PA 17403

TEL 717.887.4478
FAX 717. 699. 4843

lil@traditionalacupuncture.org



Lillian M. Morgan

M.Ac., R.Ac., Dipl. (NCCAOM)

www.traditionalacupuncture.org

Drawing from the
Well of Christ
Contemplatively
Actively

CYNTHIA F. GARIS

Director



OASIS MINISTRIES FOR SPIRITUAL DEVELOPMENT

Growing contemplative community and
deepening faith through...

- * Spiritual Companionship
- * Education in Contemplative Prayer
- * Training in Spiritual Direction
- * Leading Retreats and Workshops

419 Deerfield Road

Camp Hill, PA 17011

Phone: 717-737-8222

Email: cindygaris@oasismin.org

Web: www.oasismin.org



ALPACA FIBER

wearable art



custom
designed:
weaving

handspun yarns
glassware

kozyknoll@peoplepc.com

ART SHOW!

Dec. 2 & 3

The Art Center
School and Galleries

18 Artcraft Drive, Mechanicsburg



vartan national bank
the region's premier business bank

*Welcome to the
Everywhere Bank*

*Proudly serving our
community and beyond
for more than 86 years.*

**Local People and Worldwide Technology
Available anytime, anywhere.**

 **Vartan Way**
3601 Vartan Way
Harrisburg
657-7727

Susquehanna
10 N. Progress Ave.
Harrisburg
540-0683

Silver Spring
6480 Carlisle Pike
Mechanicsburg
591-1360 

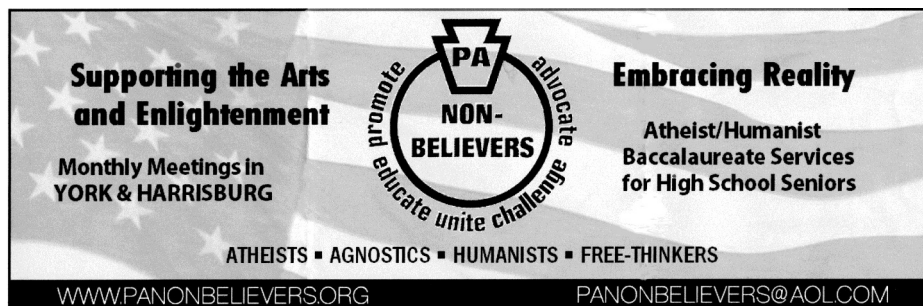


 SUE

A NU APPEAL
Salon


665 Market Street
Suite 1
Lemoyne, PA 17043

(717) 737-3211



**Supporting the Arts
and Enlightenment**

Monthly Meetings in
YORK & HARRISBURG



Embracing Reality

Atheist/Humanist
Baccalaureate Services
for High School Seniors

ATHEISTS ■ AGNOSTICS ■ HUMANISTS ■ FREE-THINKERS

WWW.PANONBELIEVERS.ORG PANONBELIEVERS@AOL.COM



Welcome!

Without you, our audience, there can be no chorus. Your enthusiasm is contagious. We thrive on it!

The chorus can't sing on love alone. So, we thank those who have provided direct financial support recently.

Jane Brickley
Lisa Bechtel & Janet Parsons
Renee Bartholomew
Germaine
Candace Kugel
Linda Mussoline
Cathy Nelson
Mary Nancarrow
Joanne Nicholson
Linda Noble
Sidney Roger
Cynthia Swanson
Susan Swope
Lucy Twitchell



We apologize if we have omitted anyone. Let us know so we can list you in the spring.



**The Chorus recognizes the following for their support
for this concert:**

Jump Street and Pennsylvania Partners in the Arts
Colonial Park United Church of Christ
Janie Womack
Bobbi Carmitchell
Kokopelli Catering
Advertisers, Raffle Donors, Sponsors and Volunteers

Central Pennsylvania Womyn's Chorus

Artistic Director

Giesala Collins

Assistant Director

Chris Purcell

Percussion

Renee Bartholomew

Piano

Anthony Haubert

Bass

Patricia George

The Singers

Soprano One

Donna Bowers

Laura Dalton*

Virginia DeChristopher

Adele Johansson (on leave)

Kimberley Koester

Lorraine Hennessy

Patty Stetler

Lucy Twitchell

Soprano Two

Anna Conway

Jan Davis (on leave)

Darla Henry

Cathy Hinman

Kim Hollich

Lee Melchior (on leave)

Cathy Nelson*

Suzanne Noll

Yvonne Rothstein



* section leader

Alto One

Chris Chew*

Susan Leviton

Laury McIntyre

Lil Morgan

Joanne Nicholson

Linda Noble

Alissa Plant

Beth Kopitski

Susan Swope (on leave)

Alto Two

Kay Baldwin

Sandy Boothe

Kim Hair*

Julie Lowery

Linda Mussoline

Amy Shestack

Arleen Shulman

Florence Tarbox

Chris Wise

The Board

President: Cathy Nelson

Vice-President: Cynthia Swanson

Secretary: Cathy Hinman

Treasurer: Miriam Glavina

Sandy Boothe

Mary Nancarrow

Joanne Nicholson

Linda Noble

Yvonne Rothstein

Susan Swope

Shirley Tannenbaum

Lucy Twitchell

Janie Womack

Janie was born into a musical family and has continued the tradition. She is self-taught on the guitar, though her first love is singing. She has participated in a wide variety of musical projects including musical comedy, choral and ensemble work, and individual performance. Her style is acoustic - her delivery is straight & true, and her Texas-grown personality is a lot of fun. In the last few years, she has begun a journey into songwriting and continues working on her own compositions. In recent years, Janie was a member of the Central Pennsylvania Womyn's Chorus as well as being one of the "J's" in the a cappella quartet "3 J's & a 'C.'" She was also a member of the local band t.l.o. stone soup, and arranged and performed vocals and played guitar and keyboard for the group. Currently, Janie performs at several local coffee houses, as well as playing local festivals and private events. She is working on her first CD, and hopes to complete it within the first half of 2007.

Bobbi Carmitchell

Lancaster County native Bobbi Carmitchell has performed for more than 25 years all over North America. She was part of the popular trio "Wind and Wood" in the early 1980s and performed with her sister, Anne, as the Carmitchell Sisters. Equally comfortable in intimate house concerts or concert halls, she has a way of involving her audience in every aspect of the live performance. Bobbi has lent her name and voice to many causes over the years and continues to donate her talents to further awareness of issues of personal importance to her: farmland preservation, domestic violence awareness, breast cancer research, AIDS education, Relay for Life, Arts In the Schools program, career days, river town improvement projects. Bobbi also organizes events to gather the community, and produced the first annual Central PA Women's Music Festival. Her work as a songwriter has been recognized and included in a number of compilation CDs throughout the country. Her latest CD is *County Wide*. Visit her website at www.bobbicarmitchellmusic.com.

Renee Bartholomew, Percussion Patricia George, Bass

Renee plays percussion in many styles, including classical, jazz, rock, and drum and bugle corps. She was the drummer for Stone Soup and plays with many area groups.

Pat has had the blues in her blood for a long time, and has played bass with many area bands, including Beulah Mae, Octavia, the Voodoo Love Hounds, the Earthblood Blues Band and T-Bone and the Turbo Kings. She lives in Lemoyne with Benie DeCat.

Marmalade

A cappella group Marmalade was originally founded in 2000 and is usually composed of Alissa Plant, founder and musical arranger; Donna Bowers; Kim Hollich; Lori McCarty and Arleen Shulman. Alissa, Donna, Kim and Arleen are CPWC singers. Marmalade welcomes CPWC singer Susan Leviton as a guest member for this concert in Lori's absence. See Marmalade's ad in this program for upcoming performances.

Giesala Collins, Artistic Director

Giesala was a member of the chorus in 1995 and sang first soprano with us for several years before leaving to pursue other musical interests, including the women's band Stone Soup and vocal group Common Threads. When she attended our spring 2002 concert, *Singing for Our Lives*, featuring Diane Benjamin's breast cancer oratorio, she was so inspired by our repertoire and our spirit that she rejoined our ranks. She became our artistic director in spring 2004. Her first accomplishment was to lead us in performing for 3000 people in the grand concert hall of Montreal at the summer 2004 GALA Choruses Festival. Giesala has boundless energy and a wealth of plans for our future. She graduated from West Virginia University with honors and received a Bachelor of Music Degree with an emphasis in music education. Her primary instrument and first love is the clarinet. She also enjoys playing the recorder, saxophone, an electronic wind instrument and the tin whistle. She lives in Mechanicsburg with her partner JoAnn and two cats, Chessie and Rocky.



Anthony Haubert, Piano



As a young lad, Anthony discovered that playing the piano came naturally; by the time he was 13, he was playing for everything from weddings to school musicals and recitals. While he did not study piano formally in college, the music faculty at Shippensburg University soon noticed his musical talents and while at Shippensburg, he accompanied *Oklahoma* and *Godspell*. Over the past several years, Anthony has served as accompanist for the Harrisburg Men's Chorus, and played piano bar and cocktail piano in many venues. Currently he is tickling the ivories at the Hotel Hershey. He studies jazz piano

with accomplished jazz pianist Katie Rudolph.

Chris Purcell, Artistic Assistant

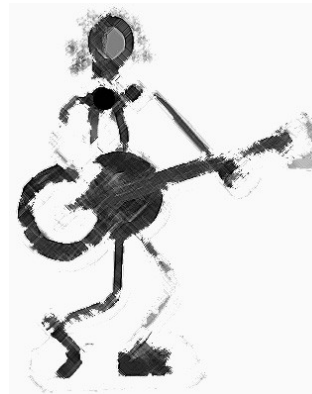
This is Chris' first season with CPWC. She graduated from the prestigious Berklee College of Music in 1983 as a film scoring major and piano principal. Since then, Chris has been involved in music as a performer, composer and teacher. As the founder and president of Anevon Music Productions, she has composed, recorded and produced music for radio and TV commercials, has been commissioned to write music in a variety of genres and composed the score for the stage production of *Yardsale: The Musical*. Presently, she is collaborating on a full length CD of original pop-jazz works. She is the recipient of many awards and honors. She is an adjunct professor of music at HACC, teaching voice, piano, song writing and composition. She is also pursuing a Master of Arts in Leadership and Liberal Studies from Duquesne University. Chris says she hopes to assist in developing the of the chorus potential in any way that she can, and is glad to be part of such a dynamic group of women.



From the Director ...

Good evening and welcome to tonight's performance. This evening is a celebration of female songwriters who forged a new genre of music from the early 1970's to the present called "Women's Music."

What is women's music? As Margie Adam has so eloquently described, "It is music composed by women that affirms and empowers women." Who is women's music for? She states, "It is for anyone, especially pro-feminist men and women."



Our concert celebrates three dimensions in recognizing these musical women. The first celebrates the women who forged the path over 30 years ago for feminist and lesbian musicians to perform, write, and produce their own music on the national stage. The second celebrates two local women in the Central Pennsylvania area who perform, write, and record their own music. The third dimension celebrates those women not heard in the mainstream music arena but who seek to find their own voices in singing, arranging or composing.

You may be familiar with some of tonight's featured songs and songwriters. The list of powerful artistic women is too many to feature in a two-hour concert. So, we have highlighted a few of the key movers and shakers of the musical women's feminist liberation movement. We hope you take the time to reflect upon where they started and how far women have come and how much further there is to go!

May you "Go Forth" from this concert inspired, strengthened, and renewed in spirit as we celebrate our Sisters of Song!

Giesala Collins, Artistic Director

PROGRAM! PROG

Wings

by Harmony Grisman
arranged by Alissa Plant
Marmalade

If You Love Me

by **Malvina Reynolds**
arranged by Joyce Elaine Eilers
Signing by Kimberly Koester

The Way You Do

by Rachael Hazen

I Ain't Afraid

by Holly Near
arranged by J. David Moore

Driven Women

by Florence Tarbox

Singer-Songwriter

Janie Womack

INTERMISSION

Please Support Our Advertisers!

Every day, small business owners are besieged by requests for donations from many worthy causes. It is impossible for them to say yes to all of them and stay in business. The fact that so many have said yes to our request that they advertise in our program book is a tribute to their respect for the Womyn's Chorus. Please patronize these businesses, and when you do, tell them it is because they placed an ad in our program book.

ADVERTISING RATES FOR CPWC

SPRING 2007

Inside Cover	\$ 135
Full Page	\$ 100
Half Page	\$ 65
Quarter Page	\$ 35

For more information, visit CPWC's website: www.cpwchorus.org

The Chorus thanks the following donors to our Fall Raffle:

Marmalade, singing group	Ann Van Dyke
The Garden Gallery, custom framing	Donna Gomboc (jewelry)
Outlooks for Hair	Cathy Hinman (scarf)
Dennis Foreman, Handyperson	Damon's Restaurant
Kokopelli Catering	Midtown Cinema
Molly M's Glass Ornaments	Harrisburg Men's Chorus
Jane Brickley	Rainbow Wedding Network Magazine
Firestone Service Center	Regal Cinema
Battlefield Bed & Breakfast, Flo Tarbox, Proprietor	Pampered Chef - Deb Bixler
Blueberry Ridge, a Poconos lodge	Myofacial Massage by Kathy Fillman
The Railroad House, Marietta	Yvonne Rothstein (quilt)
Lavender Fields	Cynthia Swanson/Mary Nancarrow/Laura
A Nu Appeal Hair Salon	Dalton, (Bird Basket)
	Nassau Inn, Wildwood Crest, NJ

The chorus also thanks the generous businesses and dedicated individuals who helped make the October 28 Spaghetti dinner a success:

Colonial Park United Church of Christ
Kokopelli Catering (Karen and Tiny)
The Healthy Grocer
Giant Foods
Weis Markets

Entertainers Marmalade, Janie Womack, Cathy Nelson, and Chris Purcell
The many volunteers who cooked, served, cleaned up, sold tickets and ran errands
Everyone throughout the community who shamelessly publicized the event

RAM! PROGRAM!

Ferron (*Testimony*) was born in Canada as Debbie Foisy. Ferron came onto the music scene in 1977 when she released her first album entitled, "Ferron" from her own record label called Lucy Records. She continues to record presently and has 12 recordings to her credit. She has been called the "Johnny Cash" of lesbian music. If you would like to see what she has been up to in the last 30 years, you can go to her website at www.ferrononline.com.



Amy Steinberg (*Music In My Soul*) is a classically trained musician on piano with a degree in theatre from the Boston conservatory. She is self-taught on guitar and blends her irreverent humor, musicality and poetry to promote openness, tolerance, and diversity. She has won numerous awards, including Songwriter of the Year by the Songwriter Showcases of America and Best Solo Performer from the Orlando Music Awards. She currently tours and records her original music. CPWC had the great privilege of seeing her perform in San Diego this year. Check her out at www.amysteinberg.net

Margie Adam ("We Shall Go Forth") singer, songwriter, composer, and activist, began a 50-city tour to promote her first album in 1977. Her appearance at the National Women's Conference in Houston Texas allowed her to experience 10,000 women singing her song "We Shall Go Forth" in three-part harmony. This song is now in the archives of the Political History Division of the Smithsonian Museum. CPWC members had the joy of experiencing a performance by Margie in San Diego this past June, combining piano and voice, lyric and melody, an intimate performance style and politically astute commentary. Explore her website at www.margieadam.com.



Photographs of the songwriters here are from websites. Their beauty inspires us as their songs move us.

**Singer-Songwriter
Bobbi Carmitchell**

Shooting Star
by Cris Williamson
Arranged by Elliot Pilshar, Transp. by Sue Coffee
Soloist: Julie Lowery

Gravity Blues
by Lisa Koch and Peggy Platt
arranged by Tom Gentry

Testimony
by Ferron
arranged by J. David Moore

Music In My Soul
by Amy Steinberg
arranged by Chris Purcell
Marmalade

We Shall Go Forth
by Margie Adam

Song of the Soul
by Cris Williamson
Janie, Bobbi and the Chorus

**Please join us in the meeting hall
for a reception provided by Kokopelli Catering.**

About our sister songwriters...

Harmony Grisman (*Wings*) describes herself as “Musician, Healer, Composer, Producer, Teacher”. She writes “songs, rounds, chants, and rants” which are simple and accessible to all. She is co-director of the women-only From Women's Hearts and Hands Guitar Camp in Mendocino, California.



Malvina Reynolds (*If You Love Me*) was born in 1900 in California to socialist immigrant parents. She came onto the mainstream folk music scene in the 1960's and took on the social issues of the day through her music. She addressed civil rights, opposition to the Vietnam conflict, and the right of workers to organize. She has been called a “Berkleyite, organizer, matriarch of the women's movement and ... one of the most influential cultural voices of the last 30 years.” She wrote hundreds of songs and traveled worldwide from Helsinki to Tokyo. Her most famous song is probably “Little Boxes.” She died in 1978 with gigs scheduled on her calendar. The website that her daughter has developed is extensive. Check out: www.sisterschoice.com/malvinamain.html



Rachael Hazen (*The Way You Do*) is a talented singer, composer, and arranger from the Denver area. She has had several compositions performed by women's choruses around the US. She has sung in small and large groups alike such as the Denver Women's Chorus, Take Note, Nothing But Treble, and the Rhythm Method.

Holly Near (*I Ain't Afraid*) is synonymous with women's feminist music. Holly was one of the first women in the early 1970's to start her own recording company called Redwood Records. Her vision for her recording company was to promote and produce music by politically conscious artists from around the world. She has released over 20 recordings in her singing



career. She is known as a singer, producer, actor, author, activist and teacher. Holly is considered to be an outspoken ambassador for world peace, multicultural consciousness, and feminism. For more information on Holly and her activism, go to www.hollynear.com

Florence Tarbox (*Driven Women*), CPWC member, has been writing piano music and songs for family and friends since 1977. She has written a number of songs for the Humanist Association in California. This is the second song that she has written for the chorus. In order to write *Driven Women*, Florence escaped to the Poconos for a private composer's retreat. Holy cow! A song grew out of this quiet alone time.



Cris Williamson (*Shooting Star*) conceived of a national all-women's record company which released her legendary classic “The Changer and the Changed.” This is one of the best selling independent releases of all time. Her vision helped set the stage for women, and specifically lesbians to write, produce, record, and issue their own material. Cris has traveled the world to Europe, Australia and New Zealand. She has performed to sold out audiences in Carnegie Hall three times. Check out www.criswilliamson.com/



Lisa Koch (*Gravity Blues*) is a singer/songwriter/comedian from Seattle. She has released four recordings and is a past member of the cult quartet “Venus Envy.” **Peggy Platt** is a Seattle comedian, voted the best comic nine times by Seattle's Weekly “Best of the Northwest.” She has opened for Cyndi Lauper, Jay Leno, Randy Newman and Jerry Seinfeld. Lisa and Peggy make up the duo Dos Fallopi.